

# "FS PUMPS" Marine Self-priming Pump for Seawater

- Specially designed for use with seawater.
- Pump and motor are constructed to withstand seawater and operated by a DC 24 V power source.
  1. Seawater proof motor: These motors are specially designed for seawater applications.
  2. Special aluminum compound for motor casing is made to withstand seawater corrosion. Moreover, this material does not add heavy weight to the pump.

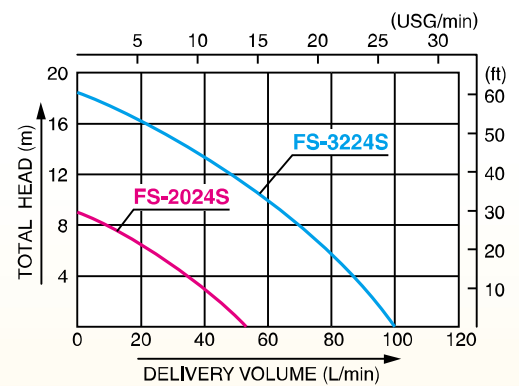


FS-3224S

## Specifications

	Model	FS-2024S	FS-3224S
PUMP	Connection Dia	20 mm (3/4")	32 mm (1 1/4")
	Connection Thread	Inner Pipe Thread	
	Total Head	9 m (30 ft)	18.5 m (60 ft)
	Delivery Volume	50 L/min (13 USG/min)	100 L/min (26 USG/min)
MOTOR	Voltage	DC 24 V	
	Rated Current	7 A	16 A
	Output	90 W / 7000 rpm	200 W / 6200 rpm
	Rating	Continuous	
	Power Cord	3 m (10 ft)	5 m (16 ft)
	Standard Accessories	1 Strainer, 2 Hose Nipples, 1 Set Carbon Brush	
	Gross Weight	29 kg (64 lbs)	28 kg (62 lbs)
Dimensions LxWxH (mm)	790 x 305 x 252	565 x 395 x 340	
Packing Unit	5	3	

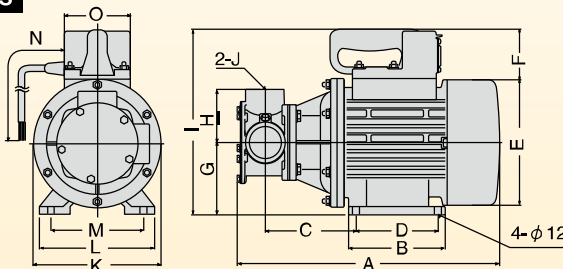
## Performance Curve



## OUTLINE DRAWING

### REVOLVEX PUMP

#### MF-40MS

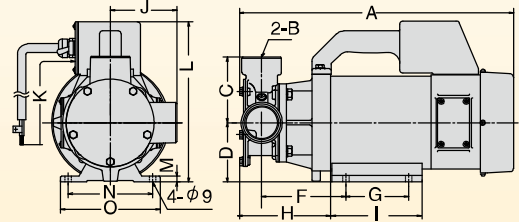


Model	A	B	C	D	E	F	G	H	I	J	K	L	M	N	O
MF-40MS	407	150	143	120	200	90	105	80	293	PS 1/2"	200	170	140	9700	120

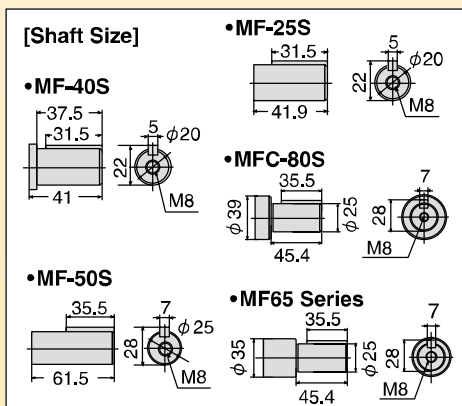
### RUBBER MASTER

#### MF-2524

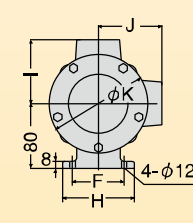
#### MF-4024M



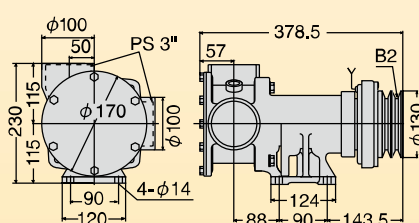
Model	A	B	C	D	E	F	G	H	I	J	K	L	M	N	O
MF-2524	281.5	PS 1"	63	60	29	119.5	66	133.5	96	63	5000	205	10	100	120
MF-4024M	394	PS 1/2"	95	75	31.5	119.5	88	131	128	95	5000	200	8	118	140



#### MF- MFC-



#### MFC-80S



Model	A	B	C	D	E	F	G	H	I	J	K	L	M	N(Pulley)
MF-25S-MFC-2524S	PS 1"	219(234)	60	72(864)	50	60	85	85	70	108	136.5	80	B1	
MF-40S-MFC-4024S	PS 1 1/2"	232(247)	62.5	73(88)	55	60	90	90	80	123	136.5	80	B1	
MF-50S-MFC-5024S	PS 2"	311(335)	90.5	85.5(108.5)	80	80	105	105	95	123	130	91	B2	
MFL(C)-65K-MFC-65K	PS 1/2"	384(403)	105	124.5(143.5)	90	90	120	120	115	115	170	130	115	B2